

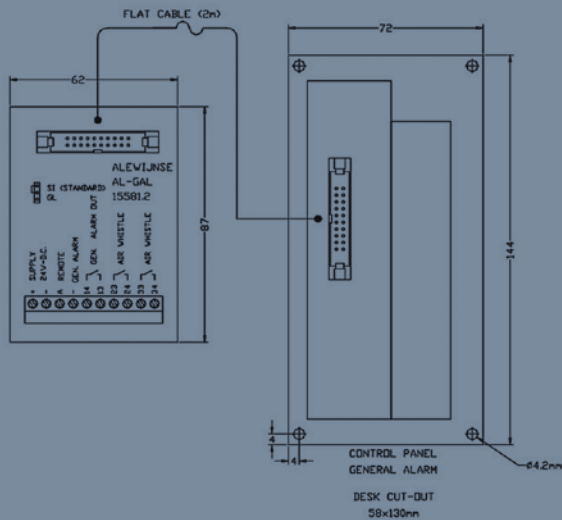
Alewijnse Marine Systems

## General Alarm Unit

 **Alewijnse**

## General Alarm Unit

Alewijnse developed a unique general alarm unit. In case of emergency, this unit will give the requested alarm signal by pushing only one single button. The front panel, mounting base and an 'easy to install' flat cable were designed with much dedication, to eliminate installation errors. Moreover, this safety system was developed in full compliance with SOLAS and Lloyd's Register.



Alewijnse Marine Systems  
 P.O. Box 49, 6500 AA Nijmegen  
 The Netherlands  
 Phone: +31 (0) 24 371 65 71  
 ams@alewijnse.com  
 www.alewijnse.com



### Features

- Voltage supply 24V- DC  $\pm 15\%$
- Settings output signals: short 2,5 sec., long 7 sec., pause 2,5 sec.
- Output signal: potential free contact 2A/250Vac– 2A/24Vdc
- External input signal: potential free NO-contact
- Degree of enclosure IP 53
- Casing flush-mounting according to DIN
- Dimensions (h x w) 144 x 72 mm
- Cut-out measures (h x w x d) 130 x 58 x 65 mm
- Weight 175 gr.
- Black synthetic top panel
- Electrical connection plug-terminal board 10 terminals
- Recommended ship's cable 1,5 mm<sup>2</sup> CU

### Benefits

This alarm unit is easy to use. The operation mode is indicated by dimmable indicator lights integrated in the selection switches. The General Alarm Unit has three basic functions:

- GENERAL ALARM mode SEMI AUTO: The signal "GENERAL ALARM" (7 short pulses followed by 1 long pulse) is transmitted for as long as the button is switched on.
- GENERAL ALARM mode MANUAL: By pushing the button "MANUAL", any signal can be generated manually.
- WHISTLE: By pushing this button the airwhistle can be switched "ON" or "OFF" during general alarm semi auto mode or manual mode.

# Alewijnse